

HOME DESIGN TRENDS 2024



Photo: ©Jeffrey Totaro, 2023.

WHAT'S IN STORE FOR '24?

Start seeing more truly unique homes! Beauty is a given, but that's not all. Today's homes must also meet our deepest needs for comfort, security, and connection with each other and our surroundings.

- 04 **BUILD BETTER, NOT BIGGER**
Long live the little house!
- 08 **OUTDOOR-IN LIVING**
Expanded options to expand our spaces
- 14 **ACCESSORY DWELLING UNITS (ADUs)**
A sidekick suite to suit your lifestyle
- 18 **THE PASS-THROUGH WINDOW**
Meet the window that makes the party
- 24 **BARNITECTURE**
Move over, farmhouse!
- 28 **CORNER WINDOWS**
Take in the whole panorama
- 32 **BONUS: COLOR ADVICE**
Sherwin-Williams experts weigh in

If you've been past any new construction homes in the past year, you might have noticed a couple of things: Windows and doors are trending bigger, outdoor living spaces are becoming increasingly sophisticated, and barn-shaped homes are rising. But the homes themselves are trending smaller. A National Association of Home Builders (NAHB) analysis* of 2023 census data found that home sizes have dropped to 2,191 square feet, the smallest they've been since 2010. And while there's a host of bad news stories that we could point to in explanation, many homes prove that bigger doesn't always mean better.

In fact, home design is responding positively to a changing environment. More than ever, today's homes are ones that truly work for their owners. Instead of cut-and-paste designs, we're seeing people prioritize their resources in a way that results in deeply personal abodes. Places that help meet our needs — to connect with nature, to feel financially secure, to be with our loved ones, and more.

Are we still living in a world that was stopped and reshaped by the global pandemic? Yes, of course. But at the same time, the home design trends we're seeing emerge point to an adaptive response. People are still creating homes designed for the way they want to live.

*"Single-Family Home Size Moves Lower to More than a Decade Low."
Accessed November 20, 2023.

Build better, not bigger

LONG LIVE THE LITTLE HOUSE!

What is it?

Building or remodeling homes that prioritize comfort and quality of life over size. Think materials that are better for people, easier on the environment, biophilic designs, and a prioritization of energy efficiency. In short, homes that feel good and are built to last.

Why is it happening?

More people are thinking about staying in their homes for longer or even forever — whether they're seniors who want to age in place or young families who want to stay rooted in their neighborhoods rather than trading up to a larger home.

Why do we love it?

It's an anti-trend in a way because people are forgoing what's popular in favor of what they value — whether they value access to a beautiful setting, a home that accommodates their hobbies, one that does its part for the environment, or all the above!



Laurie March added a second level to what was formerly a single-story home because she loved her neighborhood. Her remodeled home emphasizes indoor/outdoor living, biophilic design, and her passion for growing and cooking food. It's ideal for her lifestyle and for life in LA.



LEFT TO RIGHT
Two-panel, pocketing MultiGlide™ Door; E-Series Picture Windows and E-Series Hinged Patio Door.
Photography by Laurie March and Lauren Engel Photography.

Inside a trendsetting project

HOW ONE WOMAN BUILT HER PERFECT "REFUGE"

At only 1,500 square feet, split evenly between indoors and outdoors, this petite cabin is just right for its owner, freelance journalist Krissie Mason. Here's how she prioritized comfort and quality:

1 WORKED WITH AN ARCHITECT

Mason's property has a spectacular view of Lake Superior, so she knew she wanted to build a home that matched the beauty of its setting. To make that happen, she reached out to an architect she'd long admired, Tom Kundig of lauded Seattle firm Olson Kundig.

2 INVESTED IN HIGH-QUALITY MATERIALS

Locally sourced pine lines the interior walls, while the siding is formed from salvaged pine treated with pine tar and linseed oil — a traditional Swedish approach that nods to Minnesota's strong Scandinavian heritage. And for windows and doors, Mason chose a local manufacturer in Andersen.

3 PRIORITIZED ENERGY EFFICIENCY

Although the home is full of glass, it's also energy efficient. The home is well insulated due to the structurally insulated panels (SIP) used in the walls, floor, foundation, and roof. And the windows and doors are well suited to the climate too.

"I feel tremendously grateful for the opportunity to spend the rest of my days as [this cabin's] caretaker and then, hopefully, pass it along to my children."

— Krissie Mason
Cabin owner & freelance journalist



A six-panel MultiGlide™ Door unites the indoor and outdoor spaces in this cabin while also ushering in lake breezes and putting the stunning view on display. Across from this door in the kitchen, 400 Series Casement Windows with contemporary profiles let in light and cross breezes.



Outdoor-in living

EXPANDED OPTIONS TO EXPAND OUR SPACES

What is it?

Seamless designs that extend the backyard into the home, letting the landscape be the art and emphasizing natural materials. For example, multiple moving glass wall systems in a single space, and wall or flooring materials that continue from exterior to interior.

Why is it happening?

Indoor/outdoor living rose to prominence during the pandemic, and it's now evolving to new and more sophisticated levels. With an increased emphasis on gathering and connecting, architecture is shifting to make spaces that are built for entertaining.

Why do we love it?

You can feel the sun on your skin, breathe fresh air, and enjoy the environment that surrounds you while also basking in the comfort of your home. Even better, your space is bigger when indoors and outdoors are united into one.

“Indoor/outdoor living is so appealing because it allows us to connect to nature ... to something beyond ourselves.”

— Nick Lee
Nick Lee Architecture



Two pocketing MultiGlide™ Doors in the living room make this home the ultimate example of indoor/outdoor living.



THIS PAGE AND OPPOSITE
MultiGlide™ Doors with transoms above and E-Series windows.





Liftslide Doors in dark bronze aluminum arranged in a corner configuration.
Photography by Vance Fox Photography.

GET THE LOOK

3 WAYS TO BREAK DOWN THE WALLS



FOLDING OUTSWING DOOR

What:

A bi-folding door made of hinged panels that accordion open and together create a large opening.

Where:

Anywhere you want to open up a whole wall, and a popular choice in a remodel since extra-thick walls aren't required.

Fun fact:

This bi-folding door can be up to 10 feet tall and 48 feet wide.



MULTIGLIDE™ DOOR

What:

An extra-large sliding glass door that can disappear into the wall to create a completely unobstructed opening.

Where:

Anywhere you want to unite indoors and outdoors without giving up an inch of space. This door can be up to 10 feet tall and 50 feet wide!

Fun fact:

This door can be automated, so it will open with the touch of a button.



LIFTSLIDE DOOR

What:

Our premiere moving glass wall system, this door is precision engineered for nearly effortless operation and truly massive sizes.

Where:

Wherever you want the biggest or most luxurious indoor/outdoor experience possible, this door can be up to 16 feet tall and 60 feet wide.

Fun fact:

This door can even curve or meet at a corner to open up two walls at once!

LEFT TO RIGHT

Folding Outswing Door with specified equal lite grilles; two-panel, pocketing MultiGlide™ Door; and 16-foot Liftslide Door.

Accessory Dwelling Units (ADUs)

A SIDEKICK SUITE TO SUIT YOUR LIFESTYLE

What is it?

What isn't it might be the better question because an ADU can meet a variety of needs. It can be a place to host visiting friends and family, or to house young-adult children or aging parents. It can also be a standalone office, a deluxe pool house, or an income-generating rental unit. Generally, though, an ADU will be on the same lot as a single-family home and will have the basics needed for living, including a kitchen, bathroom, and place to sleep.

Why is it happening?

Because ADUs can meet so many needs, there are a variety of reasons they're in demand. High interest rates and a housing shortage are putting homeownership out of reach for some, and increasing demand for rental units. An aging population means multigenerational living is a good solution for aging in place and in proximity to loved ones. Remote work is creating a need for home workspaces.

Why do we love it?

It's a smart way to maximize the utility of a property. And there are so many examples of well-designed ADUs featuring clever storage and amenities you might associate with high-end custom homes, like sophisticated outdoor living spaces. These tiny homes can also incorporate accessible design to accommodate aging and other types of needs.



A four-panel E-Series Hinged Patio Door serves dual purposes in this ADU, providing an entrance, of course, but also letting in lots of light with the floor-to-ceiling glass.

Inside a trendsetting project

AN INCOME-GENERATING AUSTIN ADU

When Royce H. Flournoy, the President of Texas Construction Company, set out to build a home in booming Austin, he wanted to add a backyard ADU to provide passive income. Here's how his architect, Elizabeth Baird Brown, AIA, designed an ADU that works beautifully for both him and his renters:

- 1 MAXIMIZED SQUARE FOOTAGE**

Austin's zoning restrictions limit second-story ADUs to 550 square feet. So Baird created an open-concept floor plan to expand the feeling of the space, added a large balcony, and left the stairs unconditioned to exempt them from being included.
- 2 OPTIMIZED OUTDOOR LIVING**

Outdoor living is possible nine months out of the year in Austin. To make sure residents of the ADU could enjoy this perk, Baird added a large balcony facing a shade-providing oak tree and connected it to the apartment with sliding patio doors.
- 3 PRESERVED PRIVACY FOR BOTH MAIN HOUSE AND ADU RESIDENTS**

Placing windows higher on the wall of the ADU helps bring in natural light while keeping the apartment private, as did orienting the balcony toward the side of the property and away from the main house's outdoor spaces.

“We're all able to use the property with a sense of privacy.”

— Royce H. Flournoy
Homeowner & President of Texas Construction Company



RIGHT
100 Series Picture Window and
100 Series Casement Window.

The pass-through window

MEET THE WINDOW THAT MAKES THE PARTY

What is it?

A window that makes entertaining easy by connecting kitchens with outdoor living spaces, like patios or decks, outdoor kitchens, and backyard swimming pools. Unlike a traditional window, a pass-through can be used to create a completely unobstructed opening, so it's easy to serve drinks and snacks while never missing out on a single joke.

Why is it happening?

Adding an outdoor connection to your kitchen is really not so different from combining dining and living into one large space. Think of it as the next step in open-concept living. This trend also plays well with the pandemic-fueled rise of swimming pools, outdoor kitchens, and, of course, home cooking.

Why do we love it?

Like a patio door, it creates an outdoor connection. But unlike a patio door, it allows you to have a sink, counter space, and other features that wouldn't otherwise fit. So you can hand treats out to the kids (no mopping up wet footprints), keep your drinks cold instead of hauling them out into the sun, and, basically, live your best indoor/outdoor life!



Two was better than one in this kitchen! The MultiGlide™ Pass-Through Window on the right connects the indoor drinks station with a poolside bar outside, while the one at the back of the kitchen connects to the grilling area, making it easy to pass out food at mealtime. Architecture by Swan Architecture, construction by Streeter Custom Builders, and photography by Spacecrafting.



EXPERT ADVICE:

A DESIGNER WEIGHS IN ON PASS-THROUGHS

When interior designer Jessica Davis remodeled her home, she added a Folding Pass-Through Window connecting a kitchenette and pool area. Here are her thoughts on integrating this type of window into a home:

What's the biggest benefit of a pass-through window?

I love that you can service the outside entertaining area without having to carry everything out to another spot. It makes it much more flexible for serving food and drinks.

Where would you advise a client put a pass-through window?

I would say to put one between a kitchen or bar and an outdoor dining area. This also works well on a porch where there is some sort of overhang, which helps with weatherproofing and being able to use the window even if the weather is iffy.

When would you pick a pass-through window over a door?

I would select a pass-through window in an area where you want to optimize counter space. Here we have a set of lower cabinets under the window along with a sink. Replacing it with a door wouldn't have allowed for those features.

“I love that you can service the outside entertaining area without having to carry everything out to another spot.”

— Jessica Davis
Founder & Designer at Atelier Davis

LEFT
Two-panel Folding Pass-Through Window and
100 Series Picture Windows.

GET THE LOOK

3 WAYS TO PASS THROUGH!

There's so much flexibility built into a pass-through window. Sizes can be as small as 38 inches wide by 41 inches high or as large as a whole wall. In addition, you can add automation so your window opens with the touch of a button. You can choose to have your window disappear into the wall when open (called pocketing). And, of course, you can choose how your window opens — folding or gliding. All of this is possible because pass-through windows are actually scaled-down versions of our moving glass wall systems. Here's what else you need to know:

FOLDING PASS-THROUGH WINDOW

Folding Pass-Through Windows accordion together; can open from the left, right, or both; and tuck to one side when open.

MULTIGLIDE™ PASS-THROUGH WINDOW

MultiGlide™ Pass-Through Windows stack off to the side or disappear completely into the wall. They can also be automated.



LIFTSLIDE PASS-THROUGH WINDOW

Liftslide Pass-Through Windows roll smoothly along a flush track and offer the most design possibilities — including corners, curves, and pocketing.

LEFT TO RIGHT

A two-panel Folding Pass-Through Window; an automated, pocketing MultiGlide™ Pass-Through Window; and a 16-foot Liftslide Pass-Through Window.

Barnitecture

MOVE OVER, FARMHOUSE!

What is it?

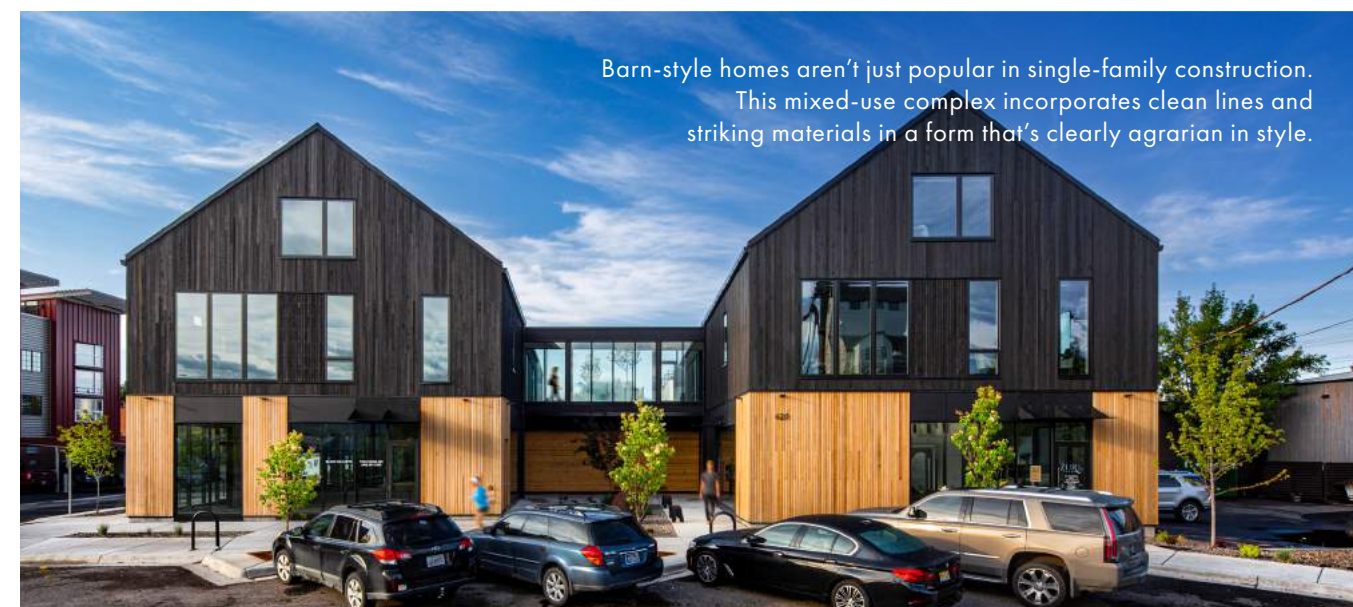
On the rise are homes whose boxy but sleek designs mimic one of America's most iconic and utilitarian buildings right down to the durable materials: concrete, cedar, and metal. And this trend isn't confined to rural areas or the Midwest; find it from coast to coast and in cities, suburbs, and rural areas alike.

Why is it happening?

A barn-style home delivers the right blend of familiar and fresh. From the outside, it reads traditional, which makes it comforting and easy to love for many. While its simple shape lends itself well to perennially popular contemporary features on the interior, like open-concept floor plans and expansive use of glass.

Why do we love it?

The straightforward shape is roomy and comfortable, making it perfect for family living. It's also easy to invite in light and views, particularly with windows and doors that feature minimal sight lines, and aluminum frames that emphasize the barn's trademark industrial styling and materials.



LEFT TO RIGHT
E-Series Casement Windows and 100 Series Single-Hung Windows.



Photo by @lindseycheneydesign (IG).

Inside a trendsetting project

THE CHARRED BARN

When a family was ready to build their dream home, they turned to Philadelphia-based MaMo Architects for a design that would be environmentally conscious, durable, and beautiful. Here's a look at the details:

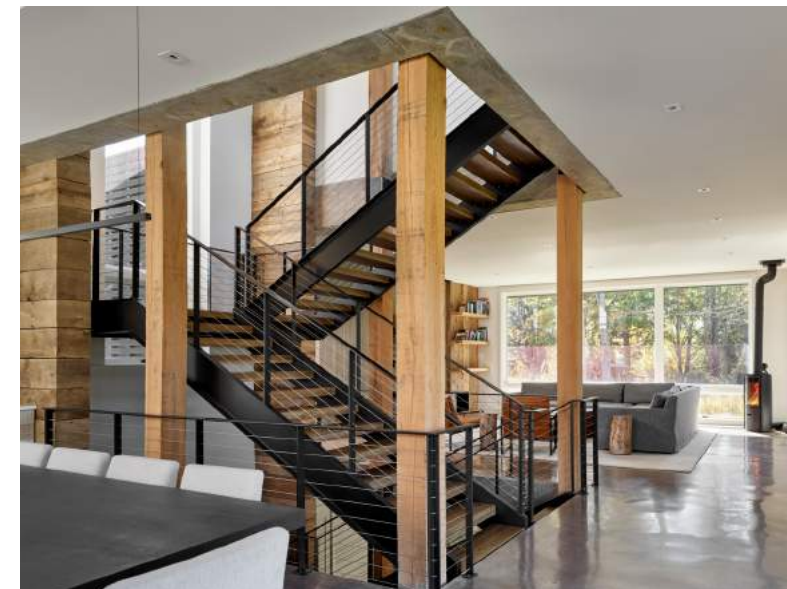
- 1 ENVIRONMENTALLY CONSCIOUS**
The home is ultra efficient with an insulated concrete form (ICF) shell that maximizes the efficiency of the radiant floor heating, triple-pane glass in the windows, passive heating and cooling strategies, solar panels, and more.
- 2 DURABLE**
The owners wanted a low-maintenance home, and they got one with the concrete shell clad in shou sugi ban siding and a standing seam metal roof. The materials also support the home's barn-style design since they're industrial in nature.
- 3 BEAUTIFUL**
The interior is filled with natural light and views of the surrounding countryside due to the massive windows and open floor plan. While a striking mix of industrial materials and wood tones creates a look that's both modern and warm.

“Barns connect us strongly to the land.”

— Matthew Moger, RA,
Principal of MaMo Architecture



Inspired by the barns dotting the surrounding countryside, this modern version stays true to the look and scale of those buildings while also accommodating contemporary tastes. Expansive A-Series Casement, Awning, and Picture Windows flood the interior with natural light. Photography on this page by ©Jeffrey Totaro, 2023.



Corner windows

TAKE IN THE WHOLE PANORAMA

What is it?

Windows that wrap around corners allow you to immerse yourself in nature while also creating a striking exterior statement. One way today's corner windows differ is that their scale is larger. We're seeing more monumental sizing and floor-to-ceiling corner windows too.

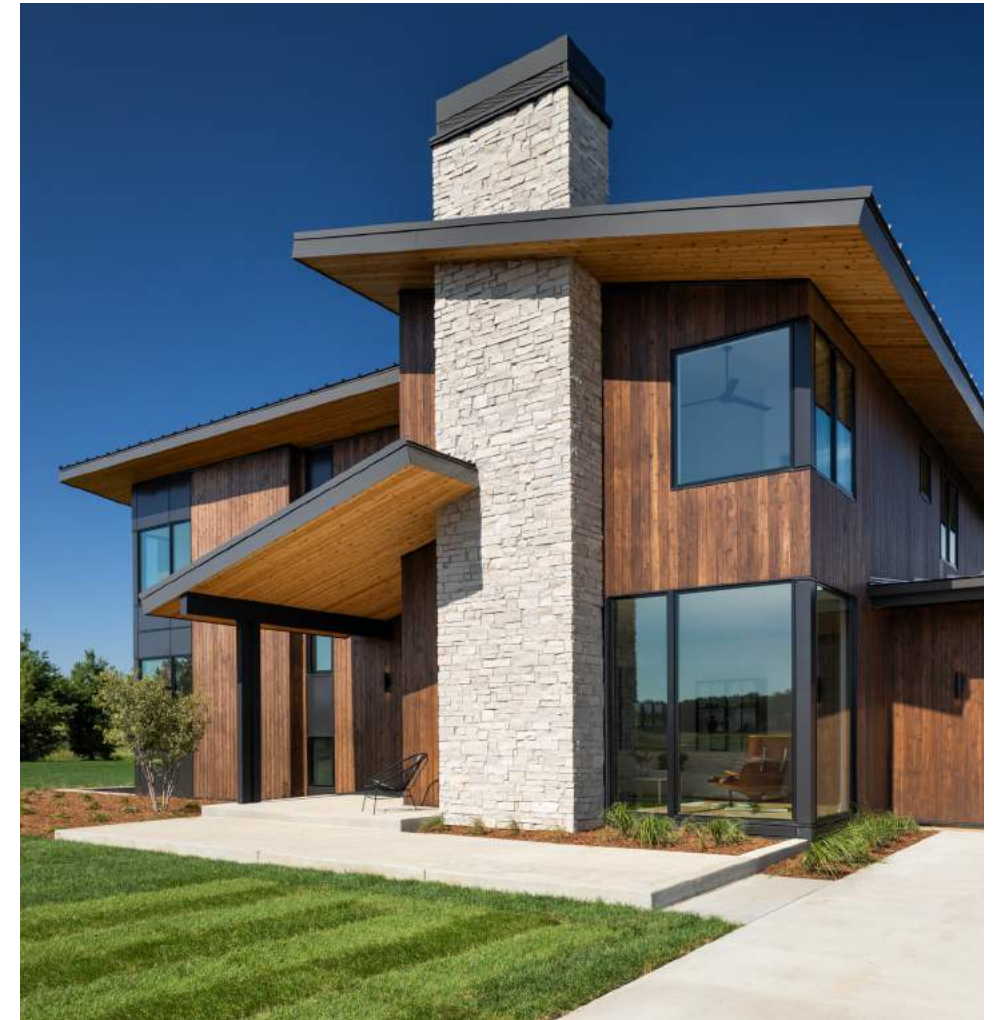
Why is it happening?

With work from home, online shopping, and endless on-demand entertainment, more living happens at home than ever before. This means we also expect more from our homes, including the feel-good benefits that views and natural light provide.

Why do we love it?

Corner windows offer the unique ability to catch more of the sun. Watch it move across the sky over the course of the day, and enjoy the energy- and mood-boosting benefits.* At the same time, these windows expand your view, making it panoramic.

[*The effects of exposure to natural light in the workplace on health and productivity of office workers: a systematic review protocol.](#) Accessed November 20, 2023.



THIS PAGE AND OPPOSITE
E-Series windows. Architecture by Imprint Architecture & Design, LLC.

GET THE LOOK

Corner windows are available through our E-Series product line, but there's more than one way to create the effect, including with traditionally framed windows placed on either side of a corner.



Floor-to-ceiling glass was the perfect way to make the most of the lake views in this bedroom. To create the look, E-Series Gliding Patio Doors with sidelights (windows next to a door) and transoms (windows above a door) were used.

100 Series Picture Windows run floor to ceiling for a corner window treatment that really expands this hallway, making it feel one with the patio outside.



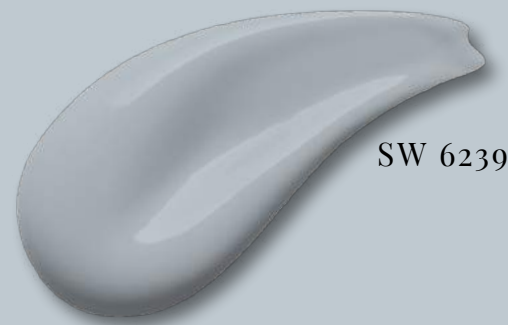
A TWIST ON THE TREND

SAY IT WITH COLOR!

Another way to breathe life into a biophilic design is with a fresh coat of paint. It's one of the simplest ways to update your home, and the right hue can make you feel like you're immersed in the natural world. To help you find that exact right hue, let these Sherwin-Williams® color selections inspire you.

Here are a few tips on how to use these colors:

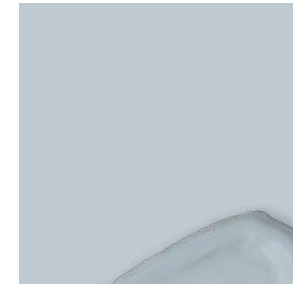
- 1** Your front door can set a tone for the whole home. If your home is airy and minimalist, give the front door a serene makeover with a fresh coat of Upward, Sherwin-Williams® Color of the Year 2024. If your home is timelessly traditional, pick a classic shade of calming blue, like Gale Force.
- 2** Your room's orientation can provide direction too. Where you have warm southern or western light, you might want to create balance with a cooler shade, like Snowbound. Similarly, in a north-facing room, you might lean toward a warmer color, like Antiquarian Brown.
- 3** Your region can provide direction as well. For example, Antiquarian Brown picks up desert tones, Honeydew matches a more tropical locale, and Palm Leaf can be a reminder of the growing season in the north.



SW 6239

SHERWIN-WILLIAMS®
COLOR OF THE YEAR 2024
UPWARD

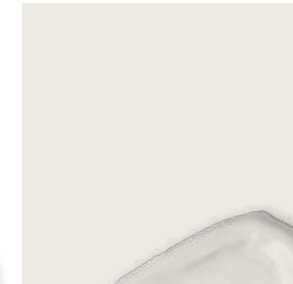
Upward
SW 6239



Honeydew
SW 6428



Snowbound
SW 7004



Gale Force
SW 7605



Tricorn Black
SW 6258



Drift of Mist
SW 9166



Palm Leaf
SW 7735



Antiquarian Brown
SW 0045



“Whether you choose a serene ocean blue or deep forest green, color is a natural way to bring a biophilic design to life.”

— Sue Wadden
Director of Color Marketing at Sherwin Williams

*Show us
where you're taking
your home's design in 2024!
#AndersenWindows*



[@andersen_windows](#)



[@andersenwindows](#)



[@AndersenWindows](#)



[@andersen_windows](#)



LOVE THE LIFE YOU SEE.®

[Find more inspiration on our blog!](#)

Andersen and all other marks where denoted are trademarks of Andersen Corporation.
©2023 Andersen Corporation. All rights reserved. 12/23

