



## STATELY WALLS OF LIGHT

Blur the lines between indoors and out with Folding outswing doors, part of the Andersen® Architectural Collection. When closed, they are a stately wall of light and when open, they fold, virtually out of sight. Contemporary and traditional style options make them ideal for nearly any home design.

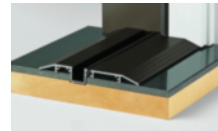
### KEY FEATURES

- 2- to 16-panel configurations available
- Doors can be built to open from the left, right or center
- Multi-point locking system secures the door firmly
- Top hung system allows for easy operation
- Optional retractable insect screen\*
- PG40 (DP +40/-40 psf) for sizes up to 24' wide and 8' tall with the on-floor drainage sill option\*\*
- PG30 (DP +30/-30 psf) for sizes up to 24' wide and 10' tall with the on-floor drainage sill option\*\*
- Maximum weight per panel with Low-E4®, SmartSun™ or Sun glass is 250 lbs per panel†

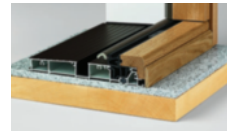
### SILL OPTIONS



Flush Sill in Bronze



On-Floor Low-Threshold Sill in Aluminum or Bronze

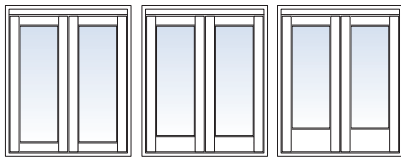


On-Floor Drainage Sill in Bronze or Gray (PG40/30 rated)\*\*

### TRADITIONAL PANEL OPTIONS

- Panel profile options include 4 1/16" stiles with 4 1/16", 8" or 12" bottom rail heights
- Built to fit openings up to 48' wide by 10' tall
- Maximum panel width is 39"
- 1 3/4" panel thickness
- Standard flush shoot bolt hardware available in matte black and satin stainless steel

#### Traditional Panels



4 1/16" Bottom Rail    8" Bottom Rail    12" Bottom Rail

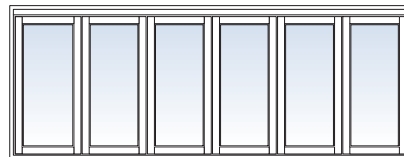


Flush Shoot Bolt

### CONTEMPORARY PANEL OPTIONS

- 3 1/16" panel profile on all sides
- Built to fit openings up to 48' wide by 10' tall
- Maximum panel width is 48"
- 2 1/4" panel thickness
- Standard concealed shoot bolt hardware available in brushed stainless steel or bronze stainless steel

#### Contemporary Panels



3 1/16" Stiles and Rails



Concealed Shoot Bolt

\*Folding door insect screens are available for purchase through an authorized Andersen dealer. \*\*Performance rating: Class SP-PG30 size tested 159" x 119.5", for a door with standard sill. Class SP-PG40 size tested 159" x 95.5", for a door with standard sill. †Verify the structural integrity of the header such that maximum deflection with live and dead loads is limited to lesser of L/750 of the span and 1/4".

# FOLDING DOORS

## FINISH OPTIONS

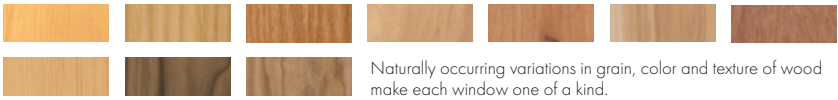
### EXTERIOR OPTIONS FOR ALUMINUM-CLAD WOOD DOORS

#### Painted Finishes



### INTERIOR OPTIONS

#### Wood Species All wood interiors are unfinished unless an interior finish is specified.



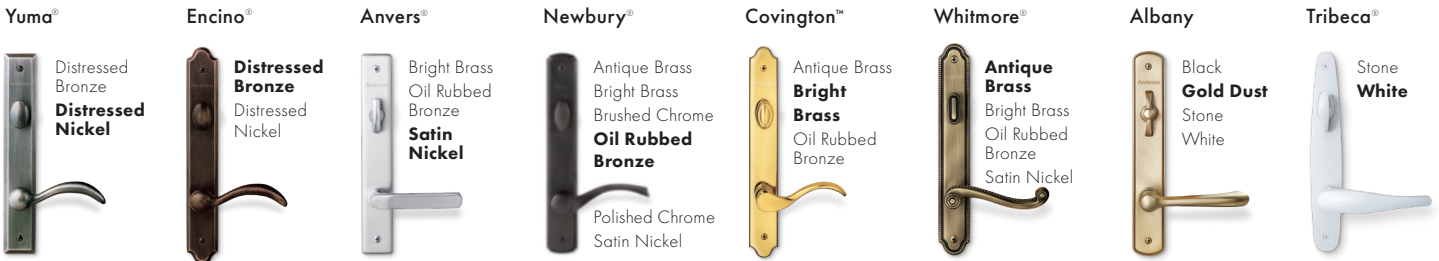
#### Painted Options Available on pine.



\*Actual wood species is either Sapele or Sipo, both non-endangered species grown in Africa, with color and characteristics similar to Central American mahoganies. \*\*Anodized silver is available on maple only. †Hardware sold separately. Distressed bronze and oil rubbed bronze are "living" finishes that will change with time and use. Bright brass and satin nickel finishes feature a 10-year limited warranty.

"FSB" is a registered trademark of Franz Schneider Brakel GmbH & Co. "Andersen" and all other marks where denoted are trademarks of Andersen Corporation. ©2020 Andersen Corporation. All rights reserved. 02/20

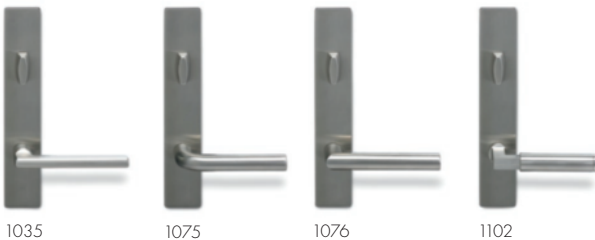
## HARDWARE



Bold name denotes finish shown.

#### FSB®

Durable, stainless steel FSB hinged door hardware features clean lines and a sleek satin finish for a thoroughly modern look. Choose from four handle styles in a satin stainless steel finish.



1035

1075

1076

1102



For more information, visit [andersenwindows.com/foldingdoors](http://andersenwindows.com/foldingdoors)



WindowRama

20+ Locations in NY, NJ & CT

Proudly Serving Remodelers, Builders and Homeowners Since 1977

800-695-RAMA

[windowrama.com](http://windowrama.com)