

THE PERFECT INTEGRATION OF EXTRUDED ALUMINUM, VINYL AND WOOD

Fusion Technology™ integrates three perfect materials – extruded aluminum, vinyl and wood – into one perfect window. This unique fusion results in improved energy efficiency & performance, noticeably enhanced aesthetics, an extreme seal, and easier installation.



- Extra-strong 0.078" vinyl base frame for superior rigidity, tight corners, total protection against rot, and enhanced resistance to air or water leaks. No vinyl components are visible when window is closed.
- Thicker, stronger extruded aluminum cladding, at least twice as thick as competitors' roll-form cladding for greater durability and dent resistance.
- Protected to the core against water with our exclusive patented CoreGuard Plus™ wood treatment for superior rot resistance.
- Choose from nine species of interior wood with three stain options and 2 colors.
- Choose from 75 exterior colors
- Top of the line Encore handle and operating hardware are standard.

OTHER PRODUCT TYPES:

Single Hungs, Double Hungs, Sliding Windows, Direct Set Windows, Awning Windows and Special Shapes for Replacement or New Construction.

HARDWARE OPTIONS



Finish Options



Matte Black



Bronze



Satin Nickel



White



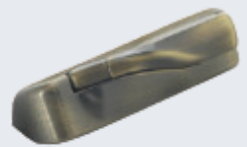
Brushed Chrome



Oil Rubbed Bronze



Chestnut Bronze



Antique Brass



Polished Chrome



Bright Brass



Champagne

*Antique Brass, Polished Chrome and Bright Brass are special order



WindowRama

25+ Locations in NY, NJ & CT

Proudly Serving Pro's and Homeowners since 1977

800-695-RAMA

windowrama.com